



## PENNSYLVANIA TRAILS OF HISTORY™

### In Pennsylvania, all roads lead to history.

To help find your path, the Pennsylvania Historical and Museum Commission (PHMC) has blazed several special-interest trails leading to some of Pennsylvania's most historic sites. We invite you to explore one site at a time, travel an entire trail, or create your own road trip through Pennsylvania's past. No matter whether you choose one of our classic trails, a trail based on PHMC's annual themes, or if you blaze your own, we're sure it will lead you to experience and embrace the people, places and events that make Pennsylvania so special.

Begin your journey online at

[www.PATrailsofHistory.com](http://www.PATrailsofHistory.com)



### Hours of Operation

**OPEN:** April through December: Monday through Saturday 9:00 am to 5:00 pm; Sunday, Noon to 5:00 pm.

January through March: Wednesday through Saturday 9:00 am to 5:00 pm; Sunday, Noon to 5:00 pm.

**CLOSED:** Holidays, except Memorial Day, July 4, Labor Day, Martin Luther King Birthday, and Presidents Day.

*Individuals with disabilities who need special assistance or accommodation should call in advance to discuss their needs. Persons who are deaf, hard of hearing, or speech impaired who wish to contact a hearing person via Text Telephone may use the PA Relay Center at (800) 654-5984.*

*Hours and rates are subject to change. Please contact us for additional event information.*



**LANDIS VALLEY VILLAGE  
AND FARM MUSEUM**  
2451 Kissel Hill Road  
Lancaster, PA 17601  
(717) 569-0401

[www.landisvalleymuseum.org](http://www.landisvalleymuseum.org)

Landis Valley Village and Farm Museum is administered by the Pennsylvania Historical and Museum Commission in partnership with the Landis Valley Associates.

8/11



Pennsylvania Historical and Museum Commission  
Tom Corbett, Governor



## LANDIS VALLEY VILLAGE AND FARM MUSEUM

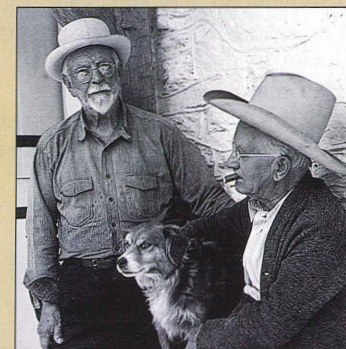
Lancaster, Lancaster County



Pennsylvania  
Historical & Museum  
Commission

## Visitor Guide

*Landis Valley is  
the name of a real  
crossroads community  
which became a  
museum.*



Founders Henry K. Landis and  
George D. Landis

The Landis Valley Village and Farm Museum is the largest museum dedicated to telling the history of the Pennsylvania Germans—or Pennsylvania Dutch, as they are also known.

The crossroads existed as an intersection of important Lancaster County byways when a hotel was built here in 1856 called the Landis Valley House and the community which grew up around the hotel became known as Landis Valley. Brothers, George D. and Henry K. Landis, who grew up in this community, began collecting local antiques and established a private museum here in 1925.

The Commonwealth of Pennsylvania acquired their museum in 1953 and greatly expanded the operation. With 100 acres, more than 50 buildings, and about 100,000 objects, the museum is one of the largest living history museums in America. The museum interprets both farm and village life of Lancaster County and how the settlers from the German-speaking regions of Europe contributed to the American experience.

### Who are the Pennsylvania Dutch?

By the early eighteenth century, Pennsylvania founder William Penn's colony had attracted many different nationalities and religious denominations. By 1750 about one-third of Pennsylvania's inhabitants originated from areas adjacent to the Rhine River in what is today southwest Germany, Switzerland and Alsace. Their religious backgrounds were varied including mostly Lutherans and Reformed, but there were also Amish, Mennonites, Dunkards, Moravians, Schwenkfelders, Roman Catholics and many others.

These German speaking settlers included farmers, tradesmen, millers, shopkeepers and other professions. They were initially concentrated in the Pennsylvania counties just beyond the immediate Philadelphia area—Northampton, Lehigh, Berks, Lebanon, Lancaster and York Counties.

Landis Valley is at the heart of this region. Here was a microcosm of the larger German experience in Pennsylvania. In addition to the hotel, there were farms, trades shops, a Mennonite Church, a livestock auction and other entities by the late nineteenth century.

Preserving the material culture associated with this experience prompted Henry and George Landis to acquire thousands of tools, implements, and other objects they felt would be forgotten. Their collection remains at the core of the museum's mission.

### The Museum Today

When visiting the museum today visitors will learn about the farming practices of the eighteenth and nineteenth centuries at the Log Farm and the Brick Farm complexes. A major exhibit of agricultural tools in the Farm Machinery and Tool Building illustrates both the breadth of the museum's collection of agrarian implements and the technological progression to the twentieth century.

The preserved crossroads includes the Landis Valley House Hotel, the Landis Brothers' House and the Isaac Landis House, buildings original to this location. Other buildings either have been moved to the site or built as exhibit spaces to tell the story of a typical crossroads setting.

The museum holds a significant collection of Pennsylvania German decorative arts objects and the Landis Collections Gallery provides up-to-date storage, curatorial work space and exhibition areas where visitors can see some of the thousands of objects in the collection.

The Landis Valley Village and Farm Museum is a living museum in the truest sense. The award-winning Heirloom Seed Program propagates disappearing varieties of plants, vegetables and field crops once common to the Pennsylvania German region. The livestock program also keeps alive the use of draft horses and oxen and offers driving schools year-round.

Throughout the year the museum is alive with the sights, sounds and aromas of working craftsmen, school workshops and tours.

The Landis Valley Village and Farm Museum is administered by the Pennsylvania Historical and Museum Commission in partnership with the Landis Valley Associates. Membership in the associates benefits the museum.





### 1. Visitor Center

Your visit begins here. The Visitor Center includes admissions, information, an introductory video and exhibit gallery.

### 2. Sextant's House

The Sextant's House (circa 1850) originally stood on the neighboring church property and is now an exhibit and activity space.

### 3. Log Farm

These re-created structures and gardens are representative of a Pennsylvania German farmstead of the period 1750–1800.



### 4. The Brick Farmstead

This original farmhouse interprets the period 1830 when Jacob and Elizabeth Landis lived here. This Mennonite family farmed and operated a blacksmith shop on this main road. The large reproduced bank barn is the center of the museum's livestock program and typical of the more prosperous farmsteads of the early nineteenth century.



### 4a. Grossmutter House

Jacob and Elizabeth Landis built this house for their retirement about 1840 when they turned the larger Brick Farmstead over to their son Jacob Landis Jr.

### 5. Blacksmith Shop

This Blacksmith Shop was moved here from Gettysburg and interprets the trade during the period 1880–1900.

### 6. Farm Machinery and Tool Barn

This building houses a major exhibit of Pennsylvania German farm machinery and tools from Colonial era into the twentieth century.

### 7. Landis Valley House Hotel

Jacob Landis Jr. built the hotel in 1856 at this crossroads and gave the name Landis Valley to the community which grew around it. The hotel is furnished to depict circa 1900.



### 8. Maple Grove Schoolhouse

Built as an Amish school in 1890 within three miles of the museum, the building and its complete original furnishings were moved here. It depicts the period 1890–1900.

### 9. Maintenance/Support Complex

This complex of buildings includes site maintenance, collections support, and storage not generally open to the public.

### 10. Country Store

This recreated building represents a typical rural store operating circa 1900.



### 11. Firehouse

This structure serves as a rental and educational facility.

### 12. Tin Shop

This recreated building interprets the tinsmith trade of the mid-nineteenth century period.

### 13. Landis Brothers' House and Stable

The original Victorian house was the home to the museum's founders, George D. and Henry K. Landis. Built in the 1870s by their parents, it is furnished to the period of 1900.



### 14. Education Building

Originally part of the Landis Brothers' House complex, this is now educational space.



### 15. Yellow Barn

In 1939 the Landis Brothers erected this barn as an exhibit hall for their growing collection and now used as educational space.

### 16. Erisman House

This circa 1820 log house was relocated from its original site on West Orange Street in Lancaster. It represents an urban Pennsylvania German dwelling of the early nineteenth century.



### 17. Tavern

The re-created Tavern represents a circa 1800–1820 public house interpreting tavern life and open hearth cooking.

### 18. Gun Shop

This re-created gunsmith shop features period tools, Pennsylvania long rifles, and hand guns.

### 19. South Courtyard Shed

### 20. North Courtyard Shed

### 21. Textile Barn

Included here are exhibits of textile processing and other historic craft demonstrations.

### 22. Isaac Landis House

This original 1870s house includes a hands-on children's activity room and educational space.

### 23. The Weathervane Museum Store

The museum store features books, crafts and other sales items.

### 24. Landis Collection Gallery

This state-of-the-art facility displays the museum's decorative arts collection. Visitors can view rotating exhibits and see behind-the-scenes curatorial work in progress.



### 25. Wagon Storage Building (not open to the public)

### 26. Chicken Coop (not open to the public)

### 27. Hands-On-House Museum

This is a private children's discovery museum not affiliated with Landis Valley Village and Farm Museum.

### Gardens and Cropland

Throughout the museum there are period gardens and demonstrations to enjoy. The award winning Heirloom Seed Project propagates and sells seeds of heirloom garden and field crops.

### Livestock

The museum is known for its livestock program. Please be alert for horse-drawn wagons and farm machinery. Please do not attempt to pet or feed the animals.

